

Public Workshop #2
November 16, 2023

WALKABLE



LEDERACH

PROJECT OVERVIEW



Project Purpose

Develop and evaluate the feasibility of ways to:

- Make Lederach more walkable
- Provide regional bicycle and pedestrian connections
- Retain and promote the village character
- Plan for traffic and circulation

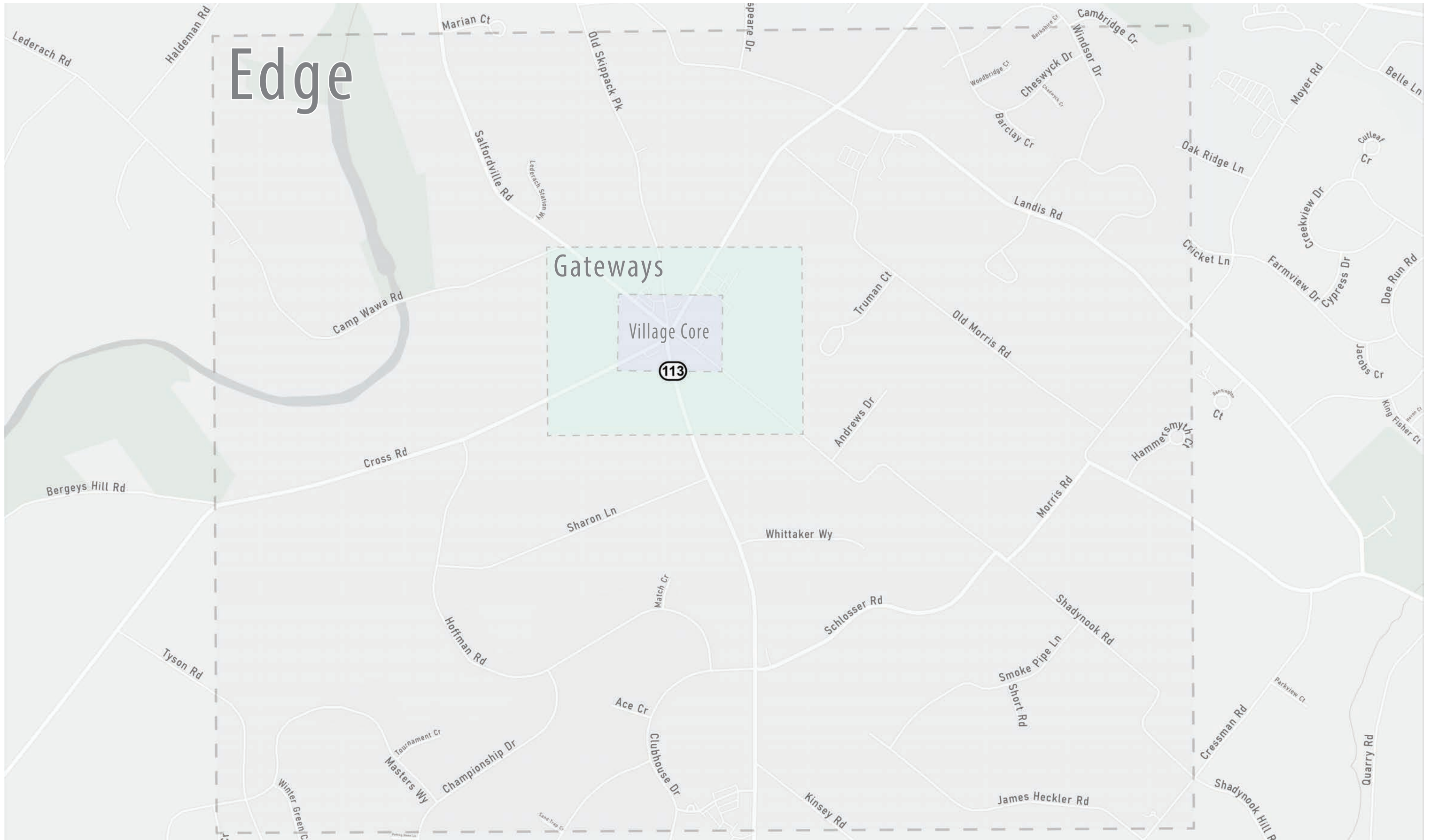
Funding Source

- Transportation and Community Development Initiative (TCDI) grant administered by Delaware Valley Regional Planning Commission (DVRPC)
- Grant monitoring and oversight provided by Montgomery County Planning Commission and DVRPC

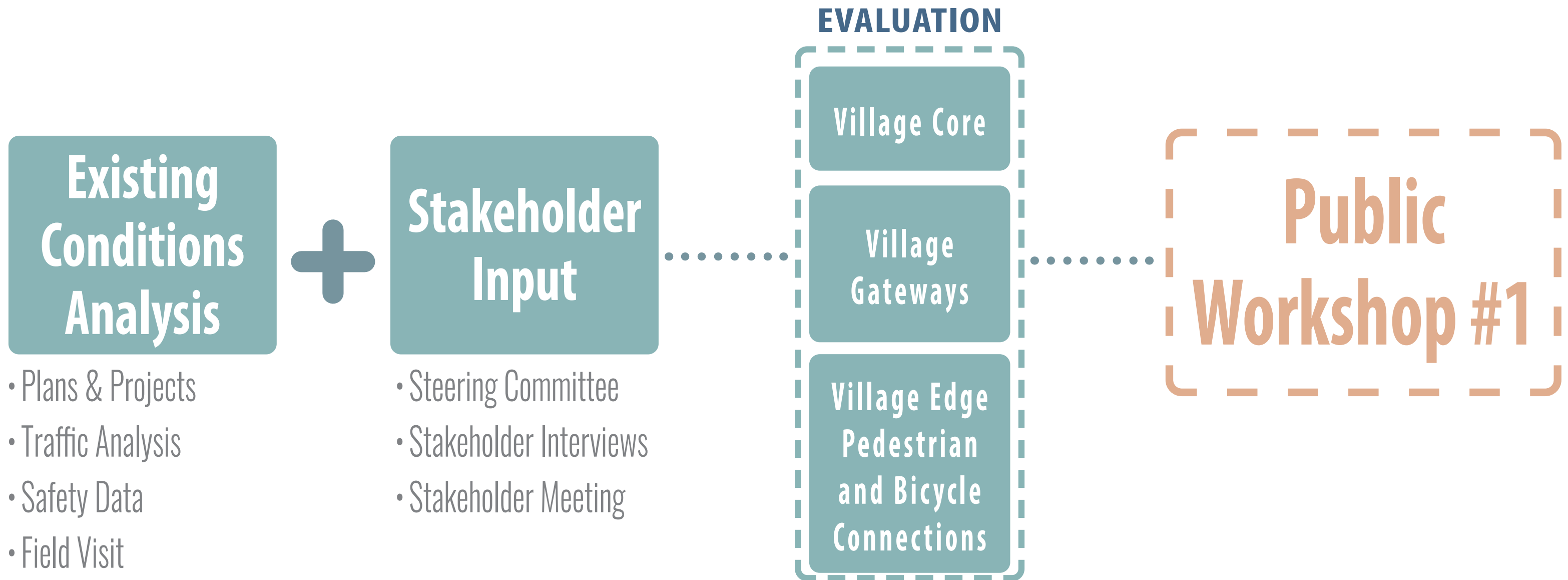
Project Team

- Lower Salford Township – Project Sponsor
- McMahon, a Bowman company – Prime
- NTM – Environmental

STUDY AREA



HOW DID WE GET HERE?



 = OPPORTUNITIES FOR COMMUNITY INPUT

WHERE ARE WE GOING?



 = OPPORTUNITIES FOR COMMUNITY INPUT

WHAT HAPPENS NEXT?

HOW DO WE IMPLEMENT THE PLAN?

CAPITAL IMPROVEMENTS

- Public Improvement Projects
- Land Development Projects

ENGINEERING AND CONSTRUCTION WILL LIKELY BE PHASED

DEPENDENT ON FUNDING

BASED ON COMMUNITY INPUT

CONCEPTUAL
ENGINEERING &
FEASIBILITY

DETAILED
ENGINEERING

CONSTRUCTION

- Permitting
- Property Owner Coordination
- Utility Coordination

POLICIES & PROGRAMS

- Zoning Amendments
- Subdivision and Land Development Ordinance (SALDO) Amendments
- Community Initiatives

VISION

The Village of Lederach is sustained as a bucolic and walkable village that reflects its historic character, fosters a sense of community, embraces small and local businesses, and provides safe connections for pedestrians, bicyclists, and motorists.

GOALS

Enhance Connectivity...

...within the village so residents and visitors can safely walk and bike

...between the village and existing/planned trails, bikeways, parks, and other recreational resources

Considerations:

- Sidewalks
- Internal walkways and paths
- Pedestrian crossing improvements: marked crosswalks, pedestrian signals
- On-road bicycle facilities
- Traffic calming measures

Manage traffic congestion, cut through traffic, and high traffic speeds through the village

Considerations:

- New roadway connections
- Traffic calming measures

Retain and celebrate the character and history of the village

Considerations:

- Gateway treatments
- Streetscape design features
- Interpretative and/or wayfinding signs

Support a mix of uses within the village, including small and local businesses

Considerations:

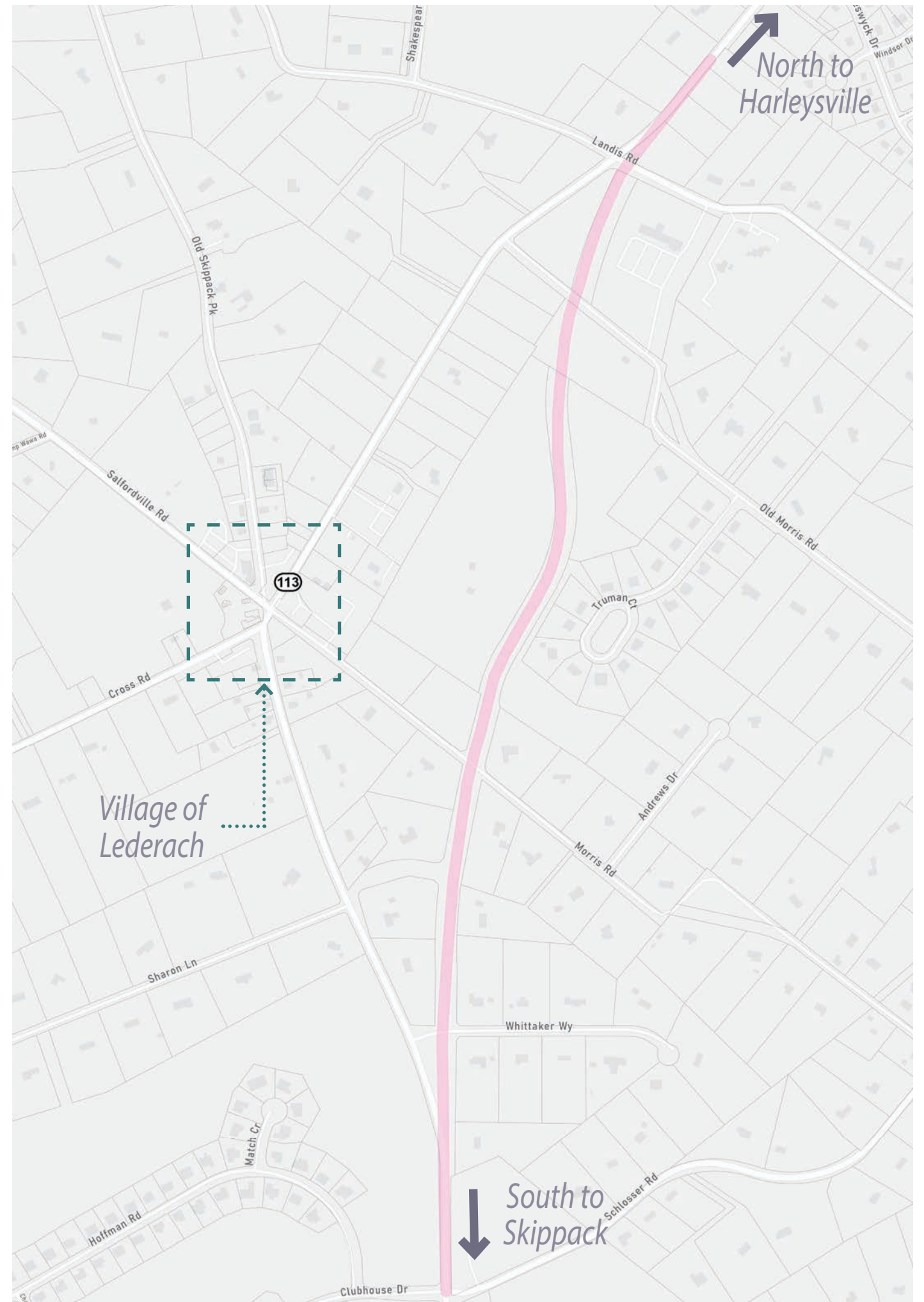
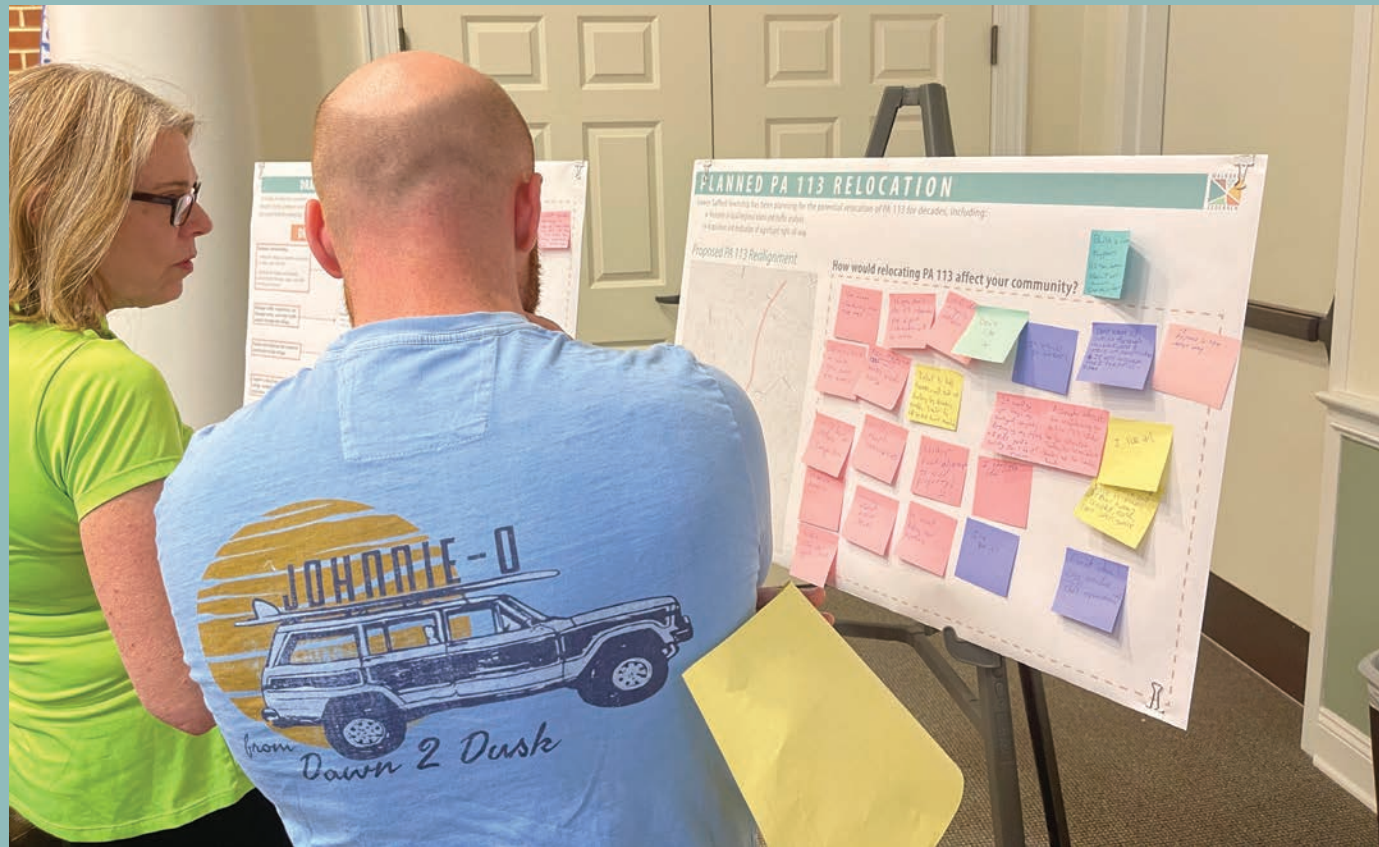
- Gathering spaces
- Shared parking

Enhance and connect to existing open spaces, natural landscapes, and historic resources

Considerations:

- Sidewalks and paths
- Public access easements
- Interpretative and/or wayfinding signs
- Open space preservation

Planned PA 113 Alternate Route



PA 113 ALTERNATE ROUTE

What We Heard...

How would relocating PA 113 affect your community?

Public feedback was generally split between support and opposition.

How would changing Harleysville Pike to one-way affect your community?

Majority of people who responded did not support one-way scenarios for Harleysville Pike.

SUPPORT

- Reduce traffic congestion
- Less truck traffic
- Support a more walkable village
- Improve safety

CONCERNS

- Will not fully address traffic issues at 6-point intersection
- Negative impact to local businesses and viability of commercial uses in the village
- Loss of open space and farmland
- Potential decrease in property values (particularly for properties adjacent to the proposed alignment)
- Concerns with safety, security, and privacy along the proposed alignment
- Requires significant investment

PA 113 ALTERNATE ROUTE

Outcomes and Considerations

- » Refer to the “PA 113 Relocation” project as “PA 113 Alternate Route”.
- » Keep Harleysville Pike designated as PA 113.
- » Advance the trail connection within the right-of-way.
- » Evaluate road design, including intersections and connections at the northern and southern ends.
- » Dismiss one-way scenarios for Harleysville Pike from further consideration.
- » Continue to pursue grant funding for design and construction
- » Focus on identifying improvements in the Village of Lederach that are not dependent on implementation of the PA 113 Alternate Route.

POTENTIAL TREATMENTS

SIDEWALKS



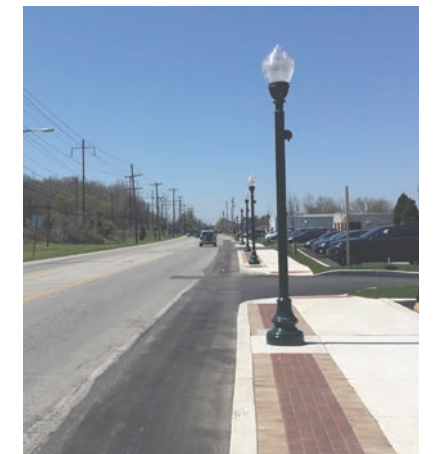
WALKWAYS



MARKED CROSSWALKS



PEDESTRIAN SCALE LIGHTING



VILLAGE CORE - EXISTING CONDITIONS



VILLAGE CORE - POTENTIAL IMPROVEMENTS

DRAFT - 11/16/23



Walkways

Mix of Public/Private

Existing

Potential

Sidewalks/ Pedestrian Paths

Existing

Potential

Developer

Tight Spaces

Destinations



Outdoor Community Spaces



Marked Crosswalks

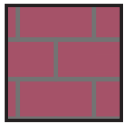


VILLAGE CORE PEDESTRIAN AND INTERSECTION ENHANCEMENTS



Graphic Legend

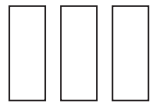
Sidewalk



Curbing



High Visibility Crosswalk



Protective wall



Pedestrian Signal



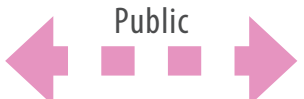
Signal Pole



Walkways



Sidewalks/
Pedestrian Paths



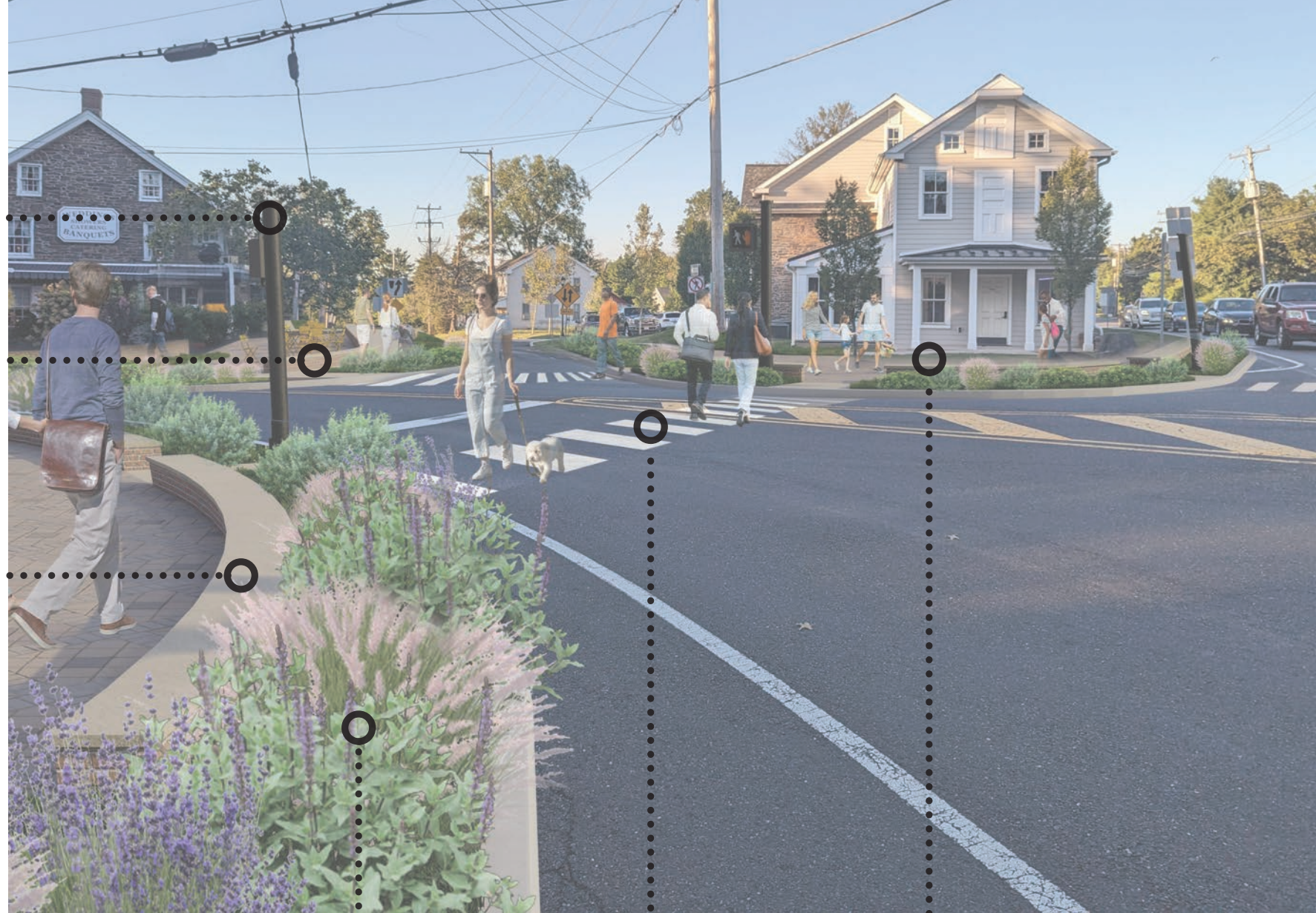
VILLAGE CORE PEDESTRIAN AND INTERSECTION ENHANCEMENTS



Pedestrian activated crossing signals

Flexible cafe seating

POTENTIAL ENHANCEMENTS



Protective wall/
Seating Area

Native plantings/
green stormwater
management

High visibility
crosswalks

Flexible
pedestrian
gathering area

EXISTING CONDITIONS



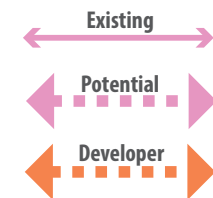
VILLAGE CORE - CAPITAL PROJECTS MAP



Walkways Mix of Public/Private



Sidewalks/ Pedestrian Paths



Tight Spaces



Destinations



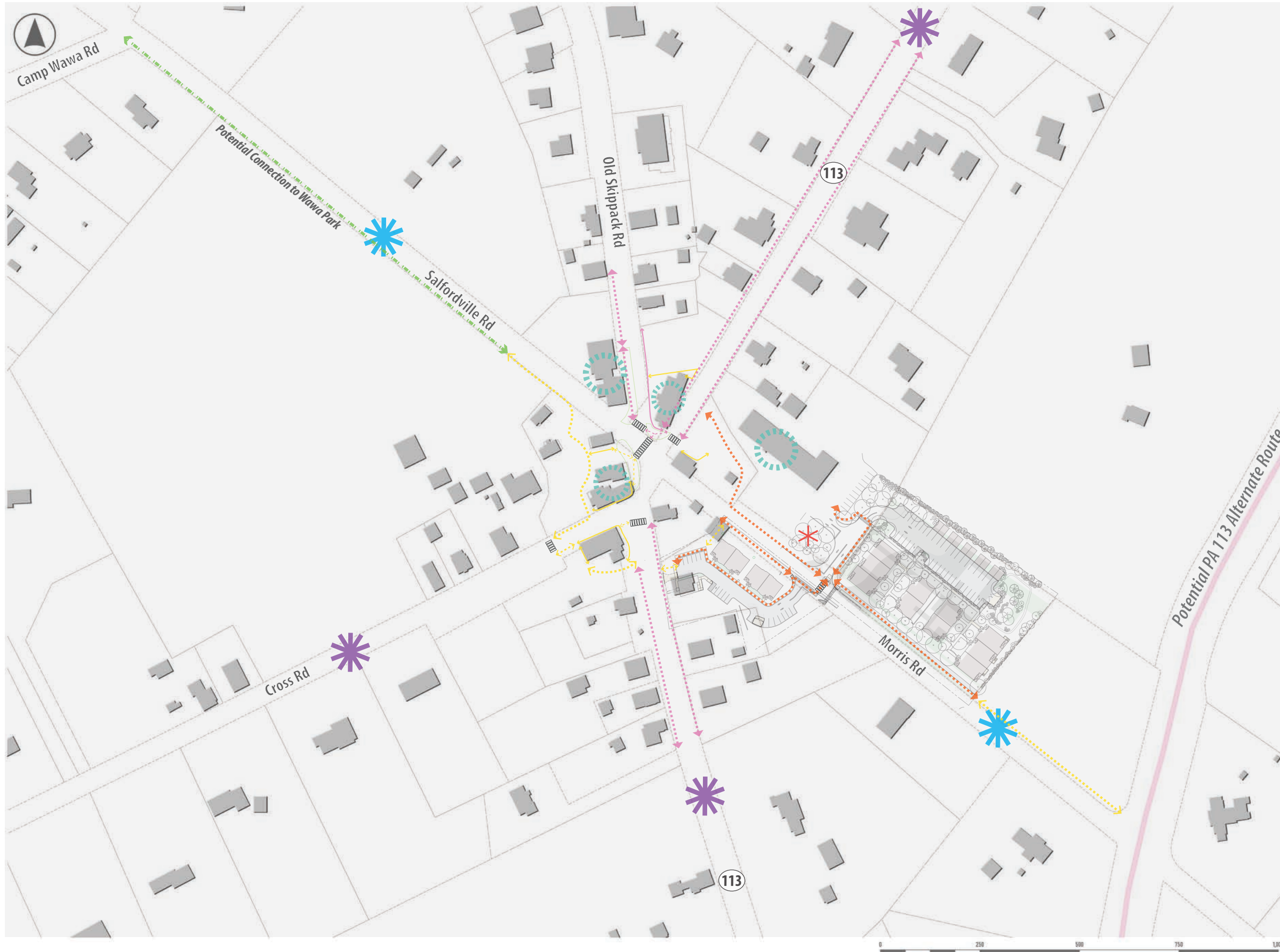
Outdoor Community Spaces



Marked Crosswalks



VILLAGE GATEWAY - CAPITAL PROJECTS MAP



Walkways Mix of Public/Private

- Existing (Yellow solid arrow)
- Potential (Yellow dashed arrow)

Sidewalk/ Pedestrian Path

- Existing (Pink solid arrow)
- Potential (Pink dashed arrow)
- Developer (Orange dashed arrow)

Destinations



Gathering/ Open Space



Gateway Treatments

Center Median



Roadside

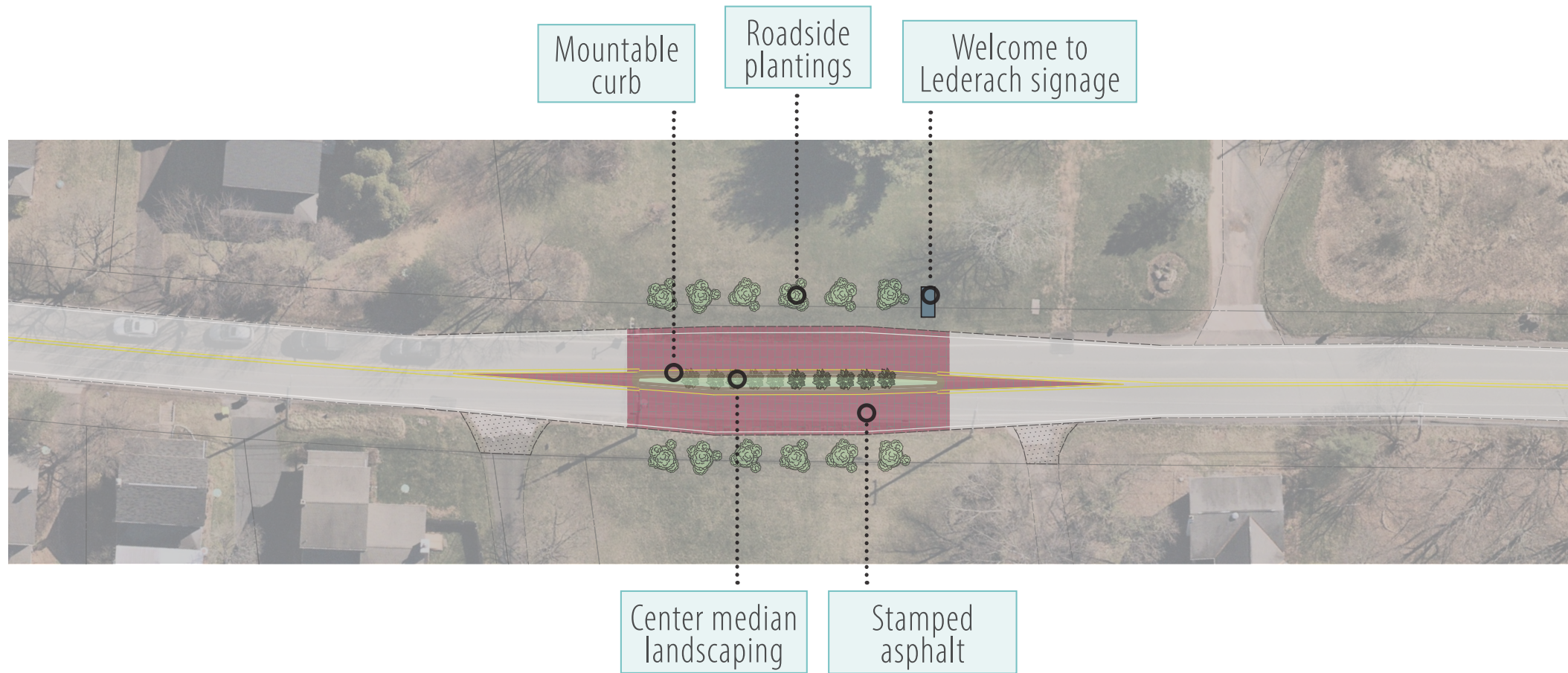


VILLAGE GATEWAY RENDERING

G1.

Median
Gateway
Treatments

PA 113 SOUTH
CONCEPTUAL PLAN



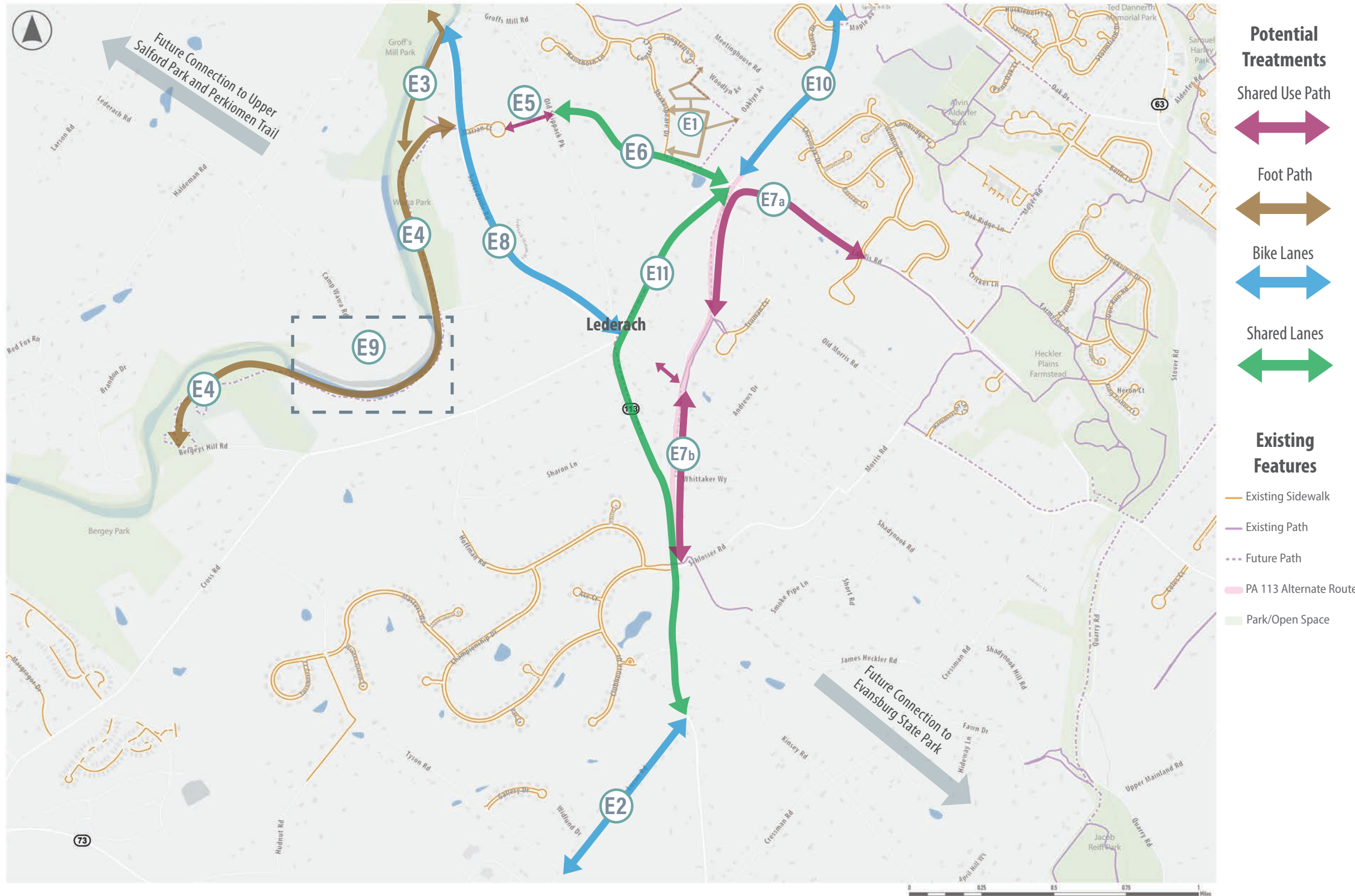
G2.

Roadside
Gateway
Treatments

SALFORDVILLE ROAD



VILLAGE EDGE – CAPITAL IMPROVEMENTS PROJECTS



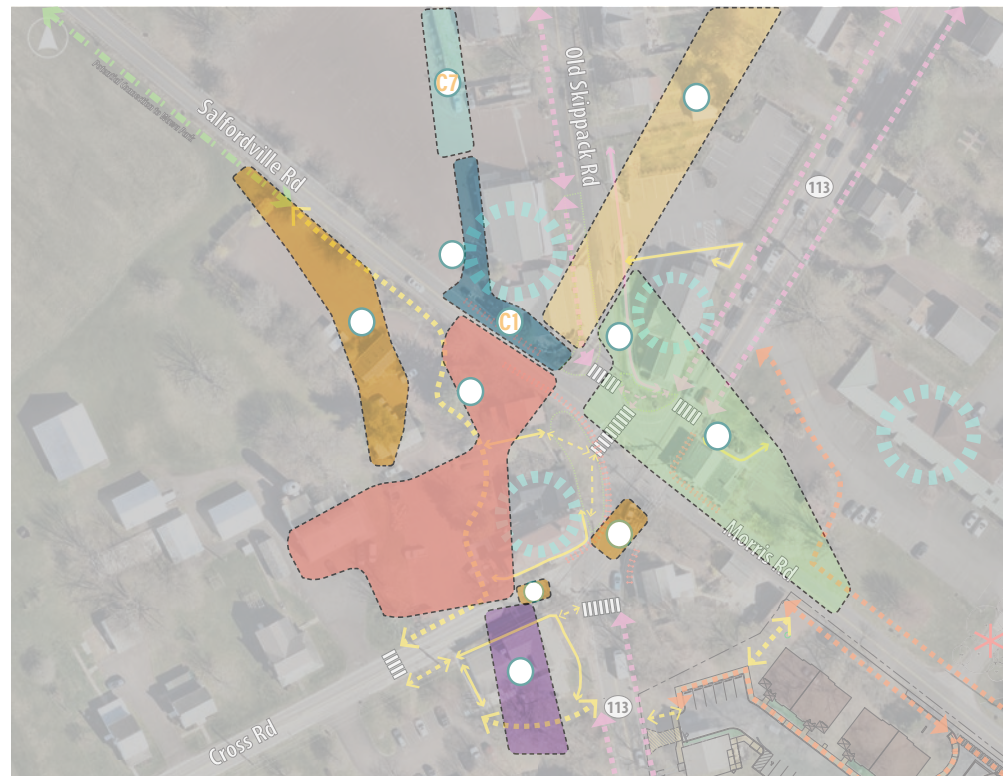
- E1 Shakespeare-Oaklyn Loop**
- E2 Lucon Road Bike Lanes**
- E3 Groff's Mill Park Connection**
- E4 Wawa Park and Bergey's Mill Park Enhancements - Footpaths and Wayfinding**
- E5 Landis Road to Marian Court Shared Use Path**
- E6 Landis Road Shared Lanes**
- E7 PA 113 Alternative Route Shared Use Path**
 - a. Northern section + Landis Road
 - b. Southern section + Morris Road
- E8 Salfordville Road Bike Lanes**
- E9 Bergey's Mill Park to Wawa Park Footpath**
- E10 PA 113 North Bike Lanes**
- E11 PA 113 Shared Lanes**

PLANS, POLICIES, AND PARTNERSHIPS

Area	Item
<i>Village Core</i>	<i>Develop design guidelines for the Village of Lederach</i>
<i>Village Core</i>	<i>Address cut-through traffic</i>
<i>Village Edge</i>	<i>Continued consideration and evaluation by Township's Sidewalks and Trails Committee</i>
<i>Village Edge</i>	<i>Evaluate feasibility of connection to Perkiomen Trail</i>
<i>Village Edge</i>	<i>Evaluate feasibility of connection to Evansburg State Park</i>
<i>Village Core/ Gateways/ Edge</i>	<i>Coordinate with property owners, business owners, and residents</i>

WHAT IS YOUR PRIORITY?

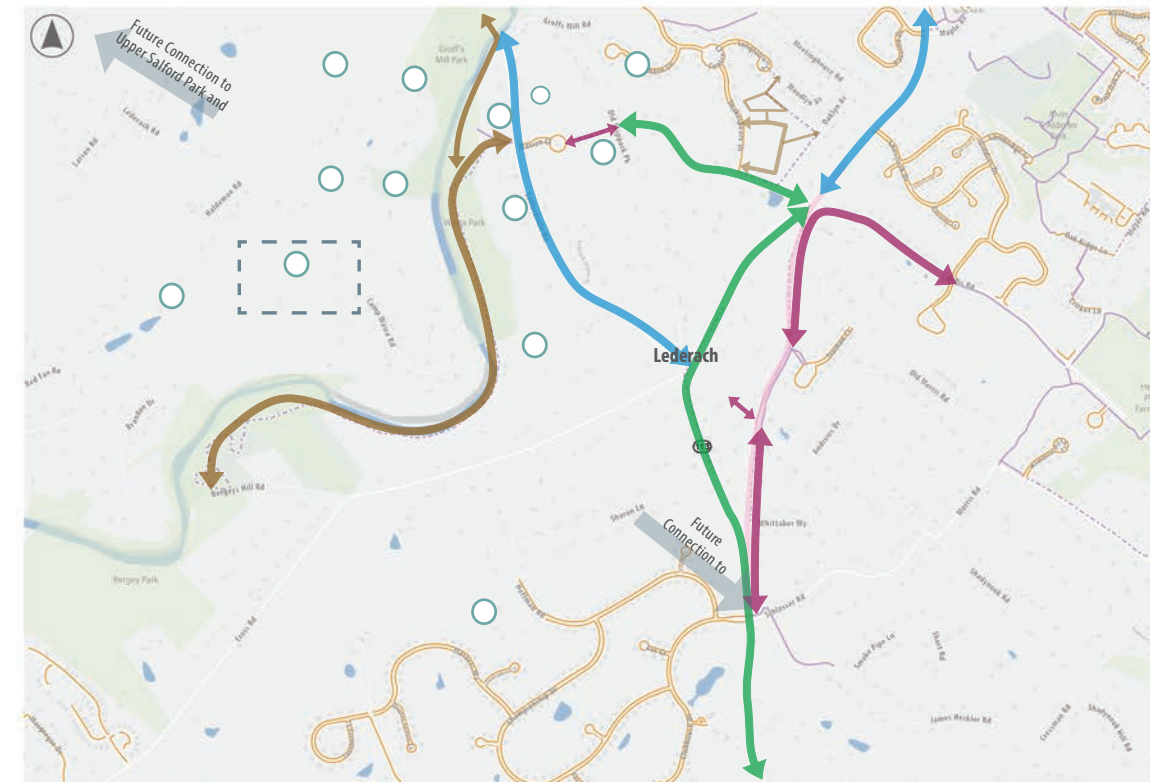
VILLAGE CORE



VILLAGE GATEWAY



VILLAGE EDGE



NEXT STEPS

- Meeting materials will be made available for public review on the Township website (lowersalfordtownship.org)
 - *Comments due by November 30th*
 - *Send comments to Rob Gates at rgates@bowman.com or 840 W. Hamilton Street Suite 622, Allentown, PA, 18101*
- Refine implementation strategies and next steps
- Draft Report for public review – ***January/February 2024***
- Final Report – ***Spring 2024***